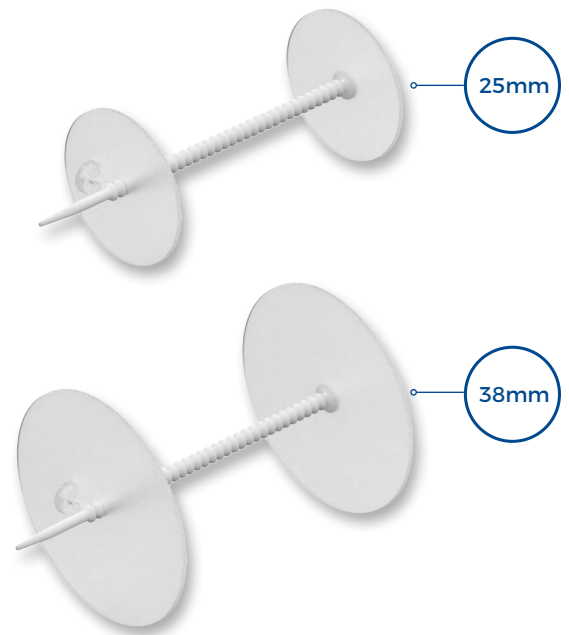


Blom-Singer® Adjustable Bi-Flanged Fistula Prosthesis

**Leakage Control and Comfort:
Two Sizes, One Solution**



The Blom-Singer® Fistula Prosthesis is a solution designed by Eric D. Blom, Ph.D. is made from medical grade silicone and is designed to reduce leakage of saliva, food and drink around a Hypopharyngeal Fistula. The prostheses come in two sizes, 25mm and 38mm, ensuring a proper fit.

KEY BENEFITS INCLUDE:

TAILORED FIT: Available in 2 diameter sizes with adjustable length, to help reduce leakage and improve comfort.

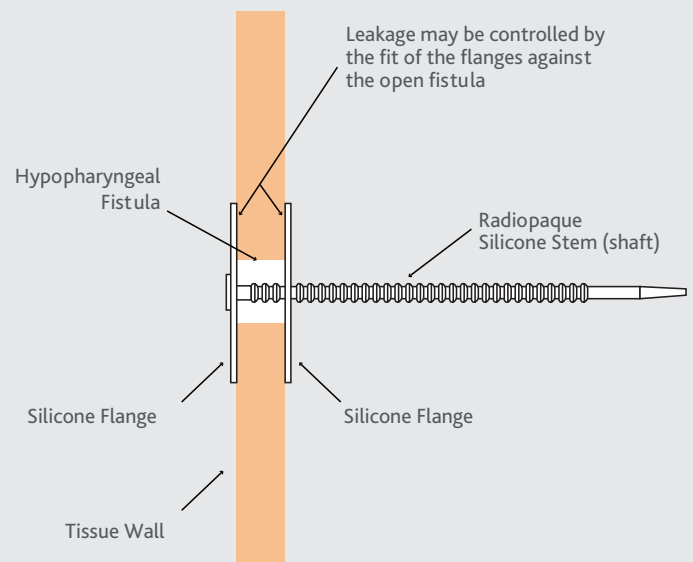
CONTROL & COMFORT DESIGN: Features soft, bi-flanged silicone for a secure fit. Healthcare provider insertion and removal without the need for surgery.

DURABLE AND SAFE: Made from medical-grade silicone, the prosthesis is designed to withstand 29 days of use. Sterile solution for a single use only.

COST-EFFECTIVE SOLUTION: Provides a non-invasive alternative to surgical interventions, offering significant cost savings for both patients and healthcare providers.

VERSATILE APPLICATION: Ideal short-term management of the Hypopharyngeal Fistulas, offering flexibility in treatment plans. Translucent to allow fistula tract visualization.

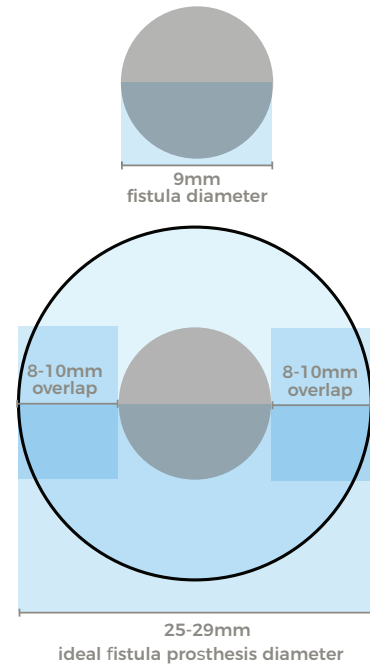
Fistula Prosthesis PLACEMENT & FUNCTION



SCHEMATIC REPRESENTATION

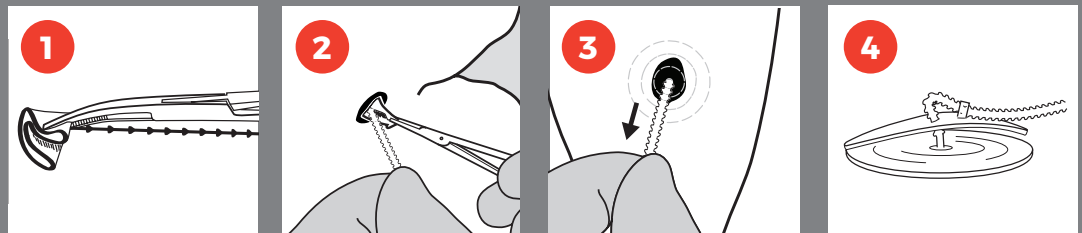
Blom-Singer® Adjustable Bi-Flanged Fistula Prosthesis

**Leakage Control and Comfort:
Two Sizes, One Solution**



SIZING DIAGRAMS

FISTULA PROSTHESIS INSERTION & REMOVAL



ORDERING INFORMATION

Call InHealth Technologies Customer Service at 800.477.5969 and provide the REF number(s) below.

SIZE	REF NUMBER	FLANGE DIAMETER	Recommended overlap of flange to fistula diameter
SMALL	FM1003	25mm	8-10mm
MEDIUM	FM1004	38mm	8-10mm