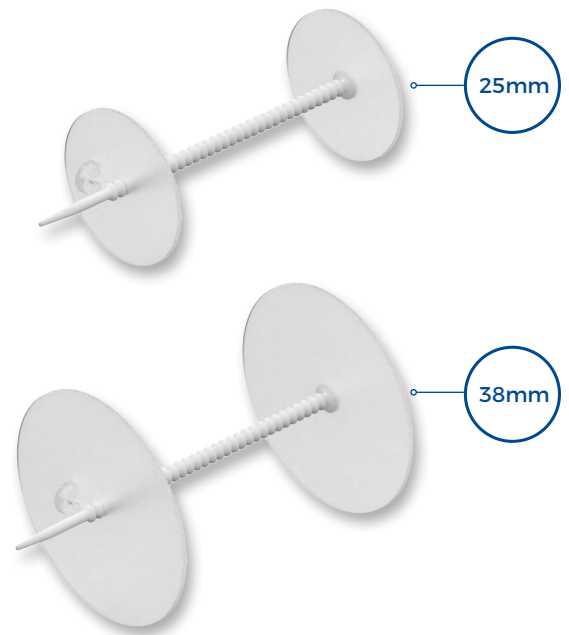


# Blom-Singer® Adjustable Bi-Flanged Fistula Prosthesis

**Leakage Control and Comfort:  
Two Sizes, One Solution**



**The Blom-Singer® Fistula Prosthesis** is a solution designed by Eric D. Blom, Ph.D. It is made from medical grade silicone and is designed to reduce leakage of saliva, food and drink around a hypopharyngeal fistula. The prostheses come in two sizes, 25mm and 38mm, ensuring a proper fit.

## KEY BENEFITS INCLUDE:

**TAILORED FIT:** Available in 2 diameter sizes with adjustable length, to help reduce leakage and improve comfort.

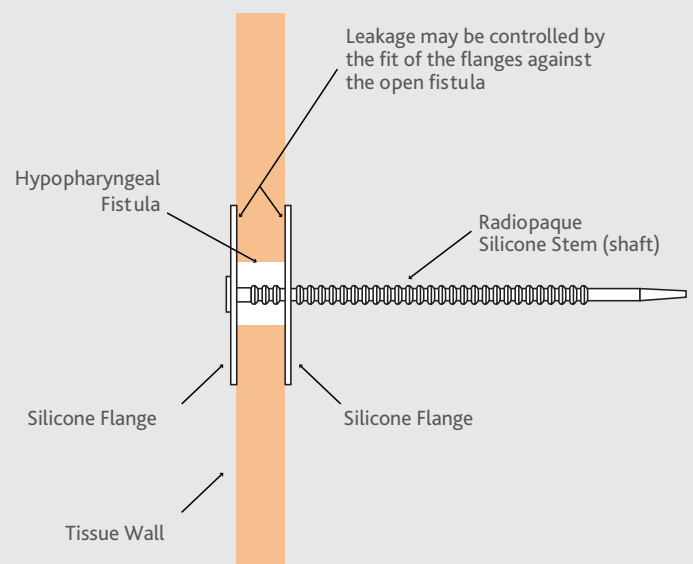
**CONTROL & COMFORT DESIGN:** Features soft, bi-flanged silicone for a secure fit. Healthcare provider insertion and removal without the need for surgery.

**DURABLE AND SAFE:** Made from medical-grade silicone, the prosthesis is designed to withstand 29 days of use. Sterile solution for a single use only.

**COST-EFFECTIVE SOLUTION:** Provides a non-invasive alternative to surgical interventions, offering significant cost savings for both patients and healthcare providers.

**VERSATILE APPLICATION:** Ideal short-term Management of the hypopharyngeal fistulas, offering flexibility in treatment plans. Translucent to allow fistula tract visualization.

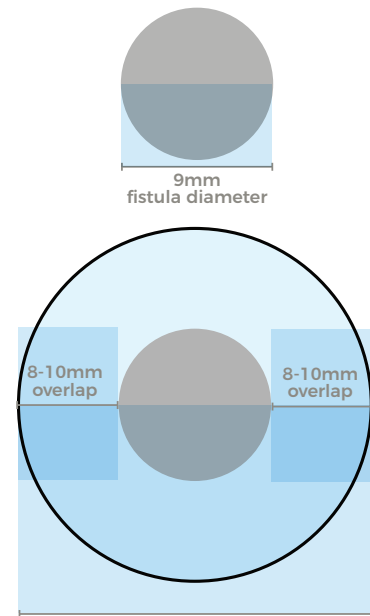
## Fistula Prosthesis PLACEMENT & FUNCTION



## SCHEMATIC REPRESENTATION

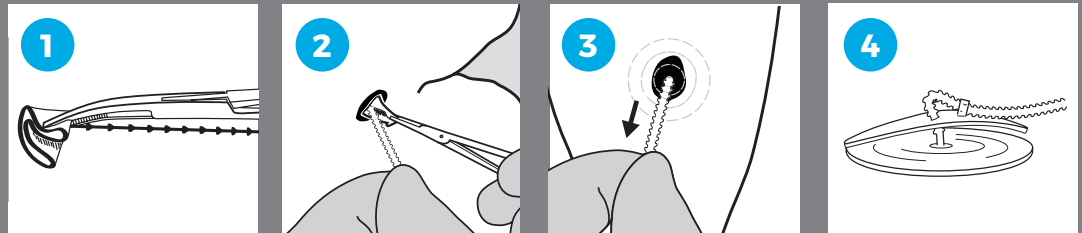
# Blom-Singer® Adjustable Bi-Flanged Fistula Prosthesis

**Leakage Control and Comfort:  
Two Sizes, One Solution**



## SIZING DIAGRAMS

### FISTULA PROSTHESIS INSERTION & REMOVAL



## ORDERING INFORMATION

Call InHealth Technologies Customer Service at 800.477.5969 and provide the REF number(s) below.

SIZE	REF NUMBER	FLANGE DIAMETER	Recommended overlap of flange to fistula diameter
SMALL	FM1003	25mm	8-10mm
MEDIUM	FM1004	38mm	8-10mm